

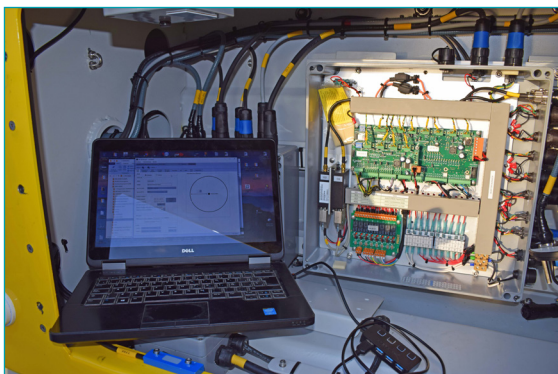
# MMB03 DATALOGGER



The **MMB dataloggers** allow the connection, setting, control and management of any type of sensor, analogic or digital and even intelligent sensors with specific protocols, such as meteorological, environmental, oceanographic or pollution sensors.

## FEATURES

They are specially designed to maintain a total control over each sensor checking the correct configuration and quality of data, processing and storage on board of the system (buoy, platform, tower, lighthouse or other) and transmitting the data to the main server through the different available communications modes (satellite, GSM/GPRS, AIS, radio and others).



## ADVANTAGES

- Low power consumption for their use with solar power supply systems.
- Controlled via latest generation processor.
- Capacity to carry out parallels and simultaneous processing activities with different sensors.
- Designed for complete management of the sensors: auto setting, timing, quality control of data, control of configuration, settings of units of measurement, processing, data statistics and more.
- Capacity to change settings through remote connection.
- Ability to interact with each sensor individually using transparent mode through remote connection.
- Multiport platform and capacity to integrate any kinds of protocols (RS-232, RS-422, RS-485, SDI-12, analog/digital I/O, Bluetooth, USB, etc).
- Capacity to develop drivers for any input or output format.
- Encrypted data storage (optional).

# MMB03

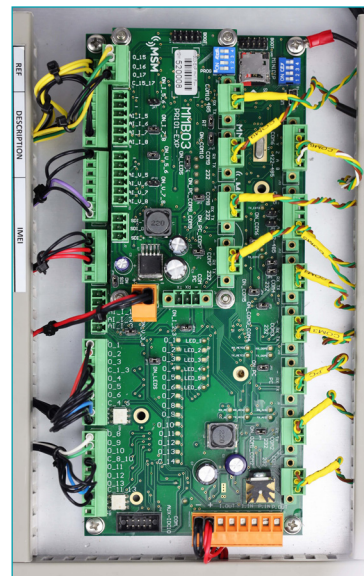
## DATALOGGER

### GENERAL SPECIFICATIONS

<b>Power supply range:</b>	10 to 36 VDC.
<b>Temperature range:</b>	-30° to + 60°C.
<b>Control unit:</b>	32 bytes CMOS microprocessor.
<b>Data storage:</b>	E2PROM memory and SD expansion memory.

### INPUTS AND OUTPUTS

<b>Digital inputs:</b>	Up to 16 optocoupled inputs of alarm or status, with configurable logic and possible delay.
<b>Digital outputs:</b>	Up to 15 Mosfet output, maximum 3A. 1 Mosfet power output of 10A.
<b>Analog inputs:</b>	16 inputs in V or I with 0-36V/0-100mA range with programmable alarms



### INTERFACE

- Up to 12 serial ports (RS232, RS485, RS422) for connection of:
  - Any type of sensors,
  - Telemetry modules (satellite, GSM/GPRS, AIS, radio and others),
  - PC for programming.

### OPTIONS

- OEM module for wave measurement.
- Impact sensor.
- Intrusion sensor.



Specifications subject to change without previous notice.



Mediterráneo Señales Marítimas, S.L.  
OCEANOGRAPHIC DIVISION

+34 96 276 10 22 / ocean@msmocean.com / www.msmocean.com

